

AZIMUTH POINTING SYSTEM (APS)



A COMPASS, BUT SO MUCH MORE.

A unique GPS-based compass, the APS delivers True North azimuth measurements, GPS position and degree of inclination—all in a single product. Not affected by local magnetic interference, it allows you to more accurately align structures like communication antennas or other directional equipment. It's as easy to use as a handheld compass or clinometer, and when attached to an LTI laser, the APS instantly measures the height and position of any remote target.

KEY FEATURES:

- Accurate, reliable True North azimuth* and inclination data
- Not affected by local magnetic interference
- Capable of sub-meter GPS location
- Azimuth accuracy qualified through visible GPS integrity parameter
- Built-in routine for distance between two remote targets
- Custom, backlit graphic display of satellite signal strength

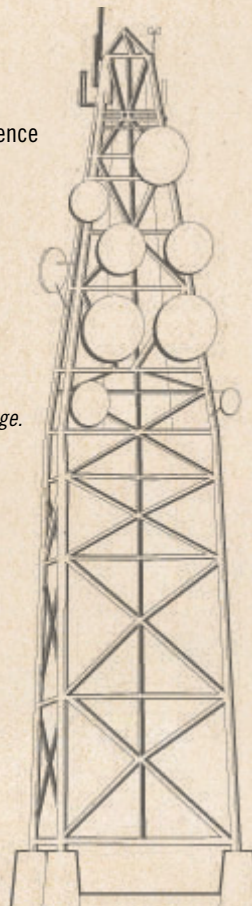
*With unobstructed GPS antenna access above the horizon and good satellite coverage.

PACKAGE INCLUDES:

- Azimuth Pointing System
- Smart Charger
- Download cable

OPTIONAL ACCESSORIES:

- Soft carrying case with foam
- Ruggedized shipping case (holds soft carrying case)
- Optical sighting scope (1.5–4x power)
- Laser kit
- Mobile mapping kit for vehicles
- Antenna alignment kit



HARDWARE SPECIFICATIONS

Weight:	3.5 lbs (1.6 kg) with attached options
Size:	4 x 5 x 26 in (10 x 13 x 66 cm) with attached options
Azimuth Accuracy:	<0.2 deg if GPS integrity is 80% or better 0.2 to 0.5 deg if GPS integrity is 50% to 80% 0.5 to 1.0 deg if GPS integrity is 30% to 50% 1.0 to 2.0 deg if GPS integrity is 30% or below ± 0.2 deg (±0.1 deg typical)
Tilt Accuracy:	
GPS Positional Accuracy:	Sub meter with WAAS (5 m when WAAS is not available)
Enclosure:	Polycarbonate
APS Mounting:	1/4-20 and 5/8-11 threads for camera or survey tripod
Mounting Options:	Sighting scope track and laser bracket
LCD:	128 x 64 Graphic Transreflective with backlighting

Power:

Internal Battery:	Rechargeable lithium ion batteries
Operation Time:	6.8 hours of use from full charge
Battery Monitor:	Remaining usage time is displayed in 0.1-hour increments
Battery Charger:	Lithium ion smart charger (1.5 hours max charge time)

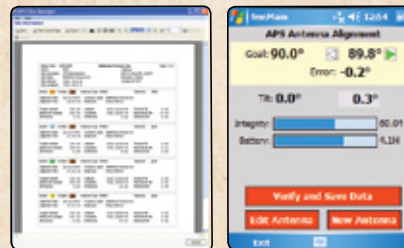
Communications:

Output Port:	For downloading data to PC, PDA or data collector
Protocol:	Programmable baud, 8 data bits, no parity, 1 stop bit
Download Cable:	Connects output port to computer (DB9)
Format:	Standard NMEA formats (\$GPGGA and \$PLTIT)
Laser Port:	For laser offset and missing line modes

Environmental:

Operational Temperature:	-30° to +60° C (-22° to +140° F)
Sealing:	NEMA 4, IP65

Note: All specifications are subject to change without notice. (Rev. June 2010)



See reverse side to learn more about APS field and desktop software!